



Your business in mind.



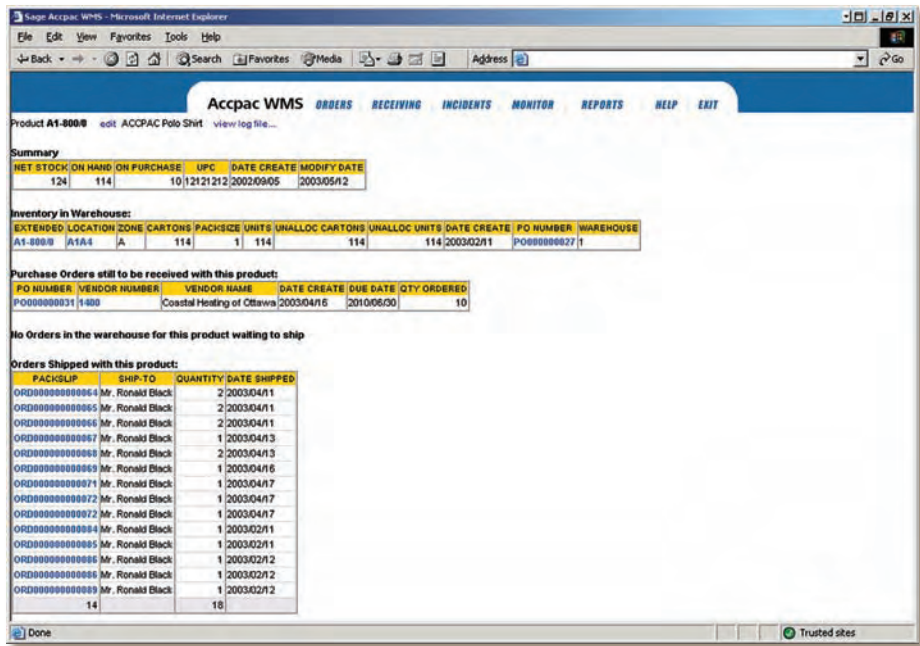
SAGE ACCPAC SAGE PRO

Sage Accpac WMS

Sage Accpac WMS (formerly ACCPAC Warehouse Management System) is designed to automate your materials-handling processes and increase productivity across your warehouse.

With Sage Accpac WMS, you can:

- Execute with advanced radio-frequency and barcoding technologies.
- Integrate with Sage Accpac ERP and Sage Pro ERP (formerly ACCPAC Advantage Series and ACCPAC Pro Series).
- Scale to accommodate future business growth.
- Benefit from e-commerce capability, including Web store integration and business-to-business electronic data interchange (EDI) support.
- Implement multiple picking methods.
- Automate inventory receipt and put-away processes.
- Increase order accuracy and eliminate errors related to paper-based procedures.
- Fill multiple orders simultaneously and track inventory in real time.
- Print packaging slips on demand.
- And much more.



With Sage Accpac WMS, real-time data can be accessed through a familiar browser-based interface.

Automate Warehouse Operations and Increase Productivity

Sage Accpac WMS is a powerful, feature-rich solution for automating the materials-handling processes of retailers, manufacturers, distributors, and third-party logistics providers. By integrating advanced radio-frequency (RF) and barcoding technologies with core warehousing automation functionality, WMS provides a comprehensive fulfillment center and warehouse management solution that includes order management, receiving, stocking, replenishment, picking, and other related warehouse tasks.

As a complete warehouse management system, Sage Accpac WMS is specifically designed to increase inventory-handling accuracy, improve allocation of human resources within the warehouse, and control carrying costs associated with obsolete and slow-moving stock. With WMS, you can efficiently pick, pack, and ship orders—putting nearly 100 percent picking and shipping accuracy within your reach.

Sage Accpac WMS scales to accommodate the varied demands of small to highly complex, high-volume distribution centers and works in conjunction with Sage Accpac and Sage Pro. Additionally, it interfaces with industry-standard shipping systems that enable an automated picking, packing, and shipping solution. This unique and seamless integration capability allows WMS to effectively orchestrate the movement of personnel and inventory. As a result, multiple orders can be picked in a single wave by one or multiple warehouse pickers, saving valuable time and dollars.



Sage Accpac and Sage Pro

Sage Accpac WMS

"Sage Accpac WMS has substantially accelerated picking productivity and increased sales."

Eric Jacobson, CFO
Tufenkian Carpets

Time-efficient Picking and Packing

Taking advantage of RF-based barcoding technologies and seamless integration with your order entry module, Sage Accpac WMS tightly orchestrates picking and packing within your warehouse, maximizes staff productivity, and facilitates quick order fulfillment. Whichever picking style works for your warehouse—wave, batch, simultaneous, or sequential zone—WMS manages the process efficiently. By maintaining detailed information on the flow of inventory from both pick and overstock locations, you can be assured that your inventory balance is always accurate.

Accurate Receiving and Shipping

The Sage Accpac WMS receipt and put-away solution effectively moves goods from your receiving dock to your warehouse and into the right location. WMS offers a streamlined shipping solution that produces shipping labels, packing slips, carton content labels, and advanced shipping notices on demand, eliminating errors in transcription from customer orders. WMS also automatically estimates the shipping weight of each order and assigns the appropriate final shipping carton based on the items in the orders.

Reduced Labor Costs

Sage Accpac WMS reduces the need for dedicated shippers and checkers, freeing warehouse personnel for other activities. Upon completing an order, packers merely verify the package weight, tape up the box, and set it aside for the carrier. WMS ensures that you know exactly what's going out the door and when. Because your inventory control module is immediately updated, your entire staff, from warehouse to customer service personnel, has complete access to all order shipment data in real time.

Error-free Receiving and Put-away

Sage Accpac WMS is designed to ensure a highly efficient receiving environment and allows for greater control in the allocation of human resources while eliminating the introduction of transcription errors. You can assign multiple employees to the receipt and put-away of a large inbound shipment. Conversely, multiple receipts can be simultaneously checked in by a single employee.

In addition, Sage Accpac WMS supports cross-docking, which means you can set aside a designated amount of received product to a staging location for immediate shipments against pending sales orders. This improves order fulfillment response time for fast-moving items and/or high-value customers.

Sage Accpac WMS allows you to capture important information about warehouse items such as weight, size, expiration date, and more. It can be configured to store products either in a default location or many locations throughout the warehouse—accelerating the put-away process. The final phase of receipt and put-away processing is the automated update of purchase orders and inventory information into your Sage Accpac or Sage Pro accounting system. This automation eliminates manual intervention and errors while providing accurate and up-to-date inventory control information.

Optimal Inventory Control

Sage Accpac WMS provides accurate and immediate information on the quantity, location, condition, status, and history of any item in your warehouse—at any time. Fully integrated with Sage Accpac and Sage Pro accounting systems, WMS ensures complete control and flow of information between your front and back office and warehouse floor. An easy-to-use browser-based interface provides the ability to generate reports and track inventory movement across your entire enterprise.

With Sage Accpac WMS, you get a clear picture of your warehouse activities, including up-to-the-minute notifications about when replenishment is needed, a full audit report of every product moved through your warehouse and automatic updates to your inventory control module. In addition, WMS dramatically improves the accuracy of physical inventory counting by date, product, and bin location using barcoding technology. It supports "first in, first out" (FIFO) and "last in, first out" (LIFO) stock rotation, serialized inventory, lot number tracking, expiration-date tracking, kitting, and other key inventory control functions, enabling complete control over stocked products. With complete inventory control management—down to the contents of specific bins—WMS helps you significantly increase productivity and save on warehouse labor costs.